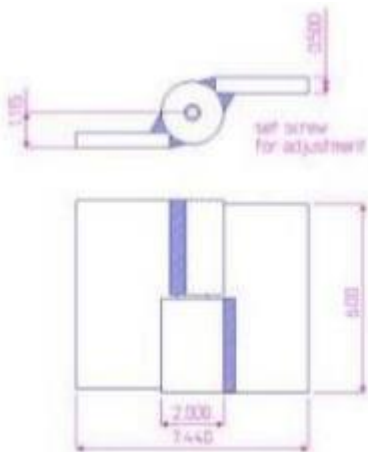
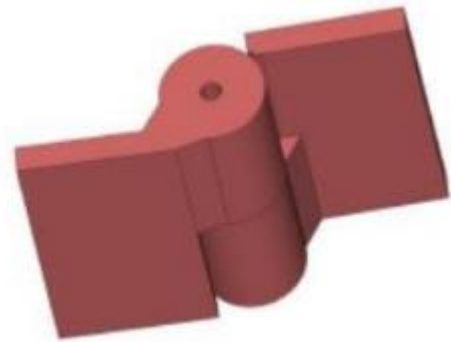


## 6" x 7 7/16" Carbon Steel Half Mortise Hinges

Model Number: 2100LH-ZINC Half Mortise

Price: £ 620

- Application: Half Mortise
- Finish: Zinc Plated
- Material Type: Carbon Steel
- Maximum Door Weight: 4000 LBS
- Maximum Radial Load: 1630 LBS
- Mount: Weld-On or Bolt-on
- Approximate Width: 7 7/16"
- Weight: 13 LBS
- Height: 6"
- Bearing Type: Needle Bearings and a Thrust Bearing
- Finish: Primer, Galvanized or Powder Coated
- Service: Heavy Duty



**Kiesler Machine Inc**

**Contact Info :**  
info@kieslermachine.uk

Smoother Than The Rest  
Guaranteed!

Data Provided For Reference Only.

Disclaimer: This drawing is property of Kiesler Machine Inc, Kieslermachine.com. It is owned with the understanding that it will in no way be used in a manner which is harmful to Kiesler Machine Inc.